

Deed
Restricted
Community

Habitat for Humanity of the Mississippi Gulf Coast



5 THRIVENT LANE

Long Beach, MS 39560

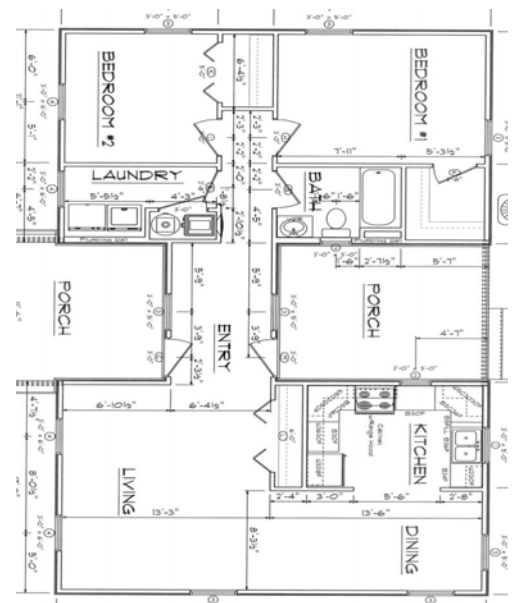
Square Footage: 1046
Bed/Bath Count: 2 Bedroom
1 Bath

Finished storage

Utilities: (All Electric) MS
Power, City of Long Beach
Water

Appliances included:
washer/dryer, stove & re-
frigerator

Limited warranty available!



1636 Pops Ferry Rd. Ste.
M-13
Biloxi, Ms 39532
Phone: 228-374-4946

visit us online at
www.hfhmgc.org

For Sales Information Contact:
Tomesha R. Johnson, Sales Specialist
228-374-4946 ext. 324
tjohnson@hfhmgc.org

