

## Habitat for Humanity of the Mississippi Gulf Coast

Deed  
Restricted  
Community



# 18 THRIVENT LANE

Long Beach, MS 39560

Square Footage: 1046

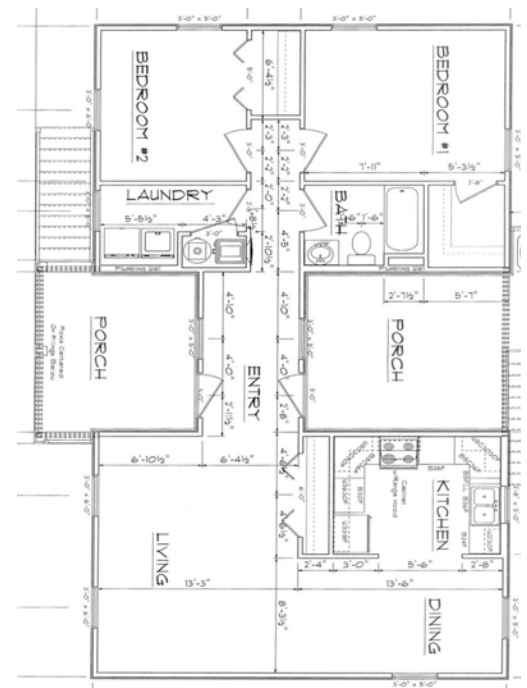
Bed/Bath Count: 2 Bedroom  
1 Bath

Attached Storage Shed

Utilities: (All Electric) MS  
Power, City of Long Beach  
Water

Appliances Included:  
Washer/Dryer, refrigerator,  
stove

Limited warranty available!



1636 Popp's Ferry Rd. Ste.  
M-13  
Biloxi, Ms 39532  
Phone: 228-374-4946

visit us online at  
[www.hfhmgc.org](http://www.hfhmgc.org)

For Sales Information Contact:  
Tomesha R. Johnson, Sales Specialist  
228-374-4946 ext. 324  
[tjohnson@hfhmgc.org](mailto:tjohnson@hfhmgc.org)

