

Habitat for Humanity of the Mississippi Gulf Coast

Deed
Restricted
Community



13 THRIVENT LANE

Long Beach, MS 39560

Square Footage: 1170

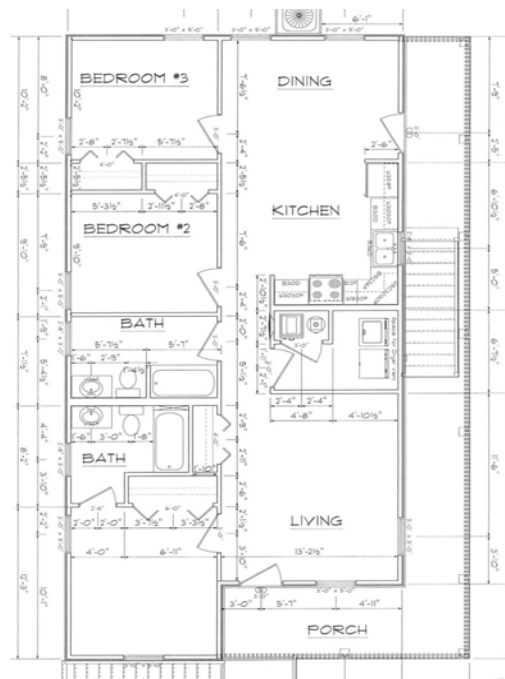
Bed/Bath Count: 3 Bedroom
2 Bath

Unattached Storage Shed

Utilities: (All Electric) MS
Power, City of Long Beach
Water

Appliances Included:
Washer/Dryer, refrigerator,
stove

Limited warranty available!



1636 Popp's Ferry Rd. Ste.
M-13
Biloxi, Ms 39532
Phone: 228-374-4946

visit us online at
www.hfhmgc.org

For Sales Information Contact:
Tomesha R. Johnson, Sales Specialist
228-374-4946 ext. 324
tjohnson@hfhmgc.org

